

CERTIFIED LAND CORNER RECORDATION

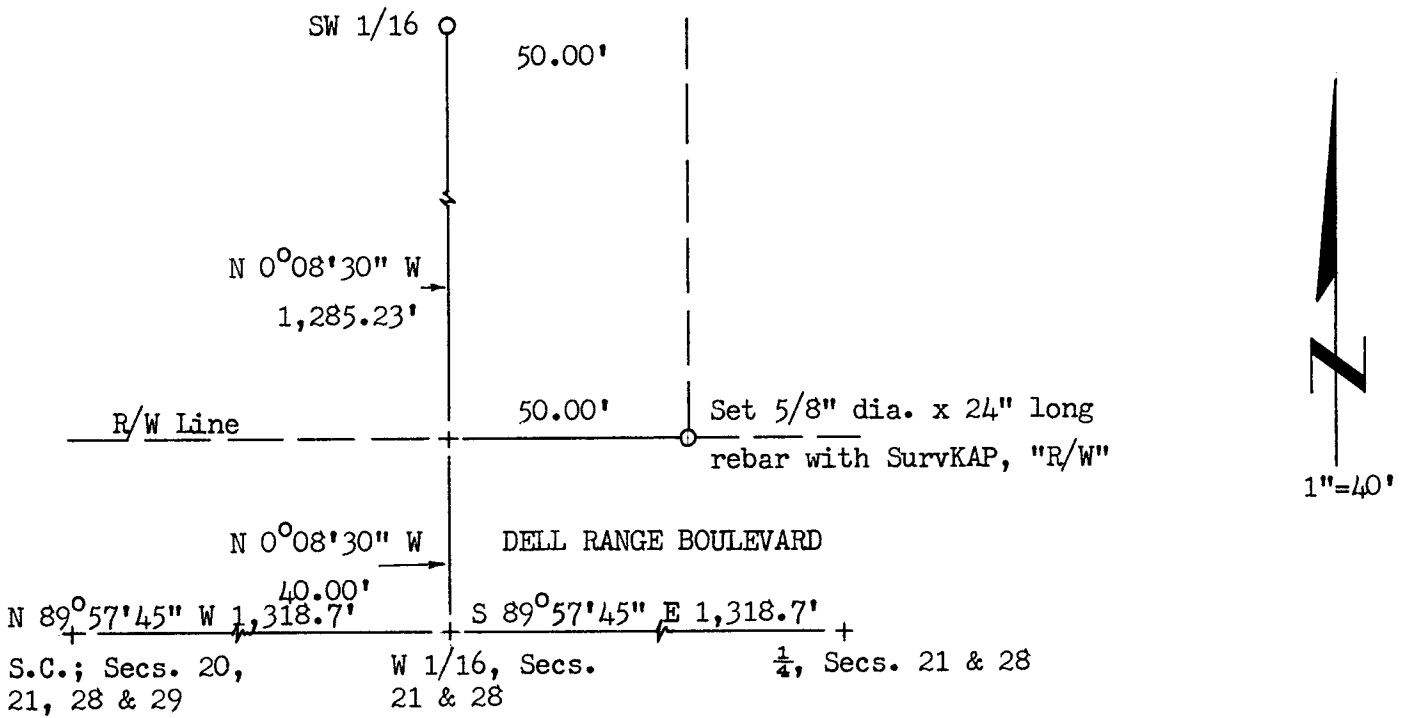
DESCRIPTION OF CORNER EVIDENCE FOUND, AND ORIGINAL RECORD (If known)

LOCATION Corner falls in traveled way of Dell Range Boulevard.
 W 1/16 S. 21 No corner monument found.
 S. 28
 T. 14N., R. 66W.
 6th P.M.

DESCRIPTION OF MONUMENT AND ACCESSORIES ESTABLISHED
 TO PERPETUATE THE ORIGINAL LOCATION OF THIS CORNER:

No monument set at corner.

SKETCH, WITH COURSE AND DISTANCE TO ADJACENT CORNER IF DETERMINED IN THIS SURVEY.
 (May Sketch or Paste Reproduction on Reverse Side.)



I, R.L. Hudson certify that I have carefully performed ~~or reviewed~~ the work done on the diagrammed corner as reported on this recordation form and approve the same.

R.L. Hudson
 Signature of Surveyor

Wyoming L.S. No. 519
 Registration No.

STATE OF WYOMING,
 Office of Clerk and Recorder,
 County of Laramie


This "corner record" was filed for record on the 23rd day of May, 1972, was noted on the cross-index plat and is assigned page No. 14-66, in book No. ONE.

John B. Allison kw
 County Official

Cross Index No. _____	T. _____	R. _____	Mer. _____
_____	T. _____	R. _____	Mer. _____
_____	T. _____	R. _____	Mer. _____
_____	T. _____	R. _____	Mer. _____
_____	T. _____	R. _____	Mer. _____
_____	T. _____	R. _____	Mer. _____
_____	T. _____	R. _____	Mer. _____

The State of Wyoming }
County of Laramie } SS

This instrument was filed for record
at 9:18 o'clock P. M. on the
23rd day of May
A. D. 19 72 and duly recorded in
Book on page



County Clerk & Ex-Officio Registrar of Deeds
By _____, Deputy